

25/505-507 Wentworth Avenue Toongabbie NSW

2  1  1 

Sunny and spacious, this first floor 2 bedroom apartment offers a unique "villa style" design with it's own private courtyard and is conveniently located just a few minutes' walk to Toongabbie Train Station & Shopping Plaza ensuring a convenient and modern lifestyle while still being totally affordable.

Price : \$ 452,000

Land Size : 115 sqm

View : <https://www.elderstoongabbie.com.au/sale/nsw/western-sydney/toongabbie/residential/unit/7875204>

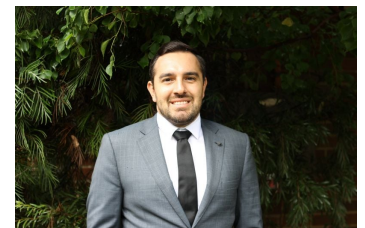
Located within the sought after and family friendly "Olympia Gateway" complex, the apartment offers larger than expected living areas designed to capture maximum sunlight thanks to it's northern aspect.

The large kitchen with natural gas cooking adjoins the enormous living and dining room which opens directly onto the private courtyard.

With only a few steps to climb to reach the apartment, it



Nick Bardon
02 9896 2333

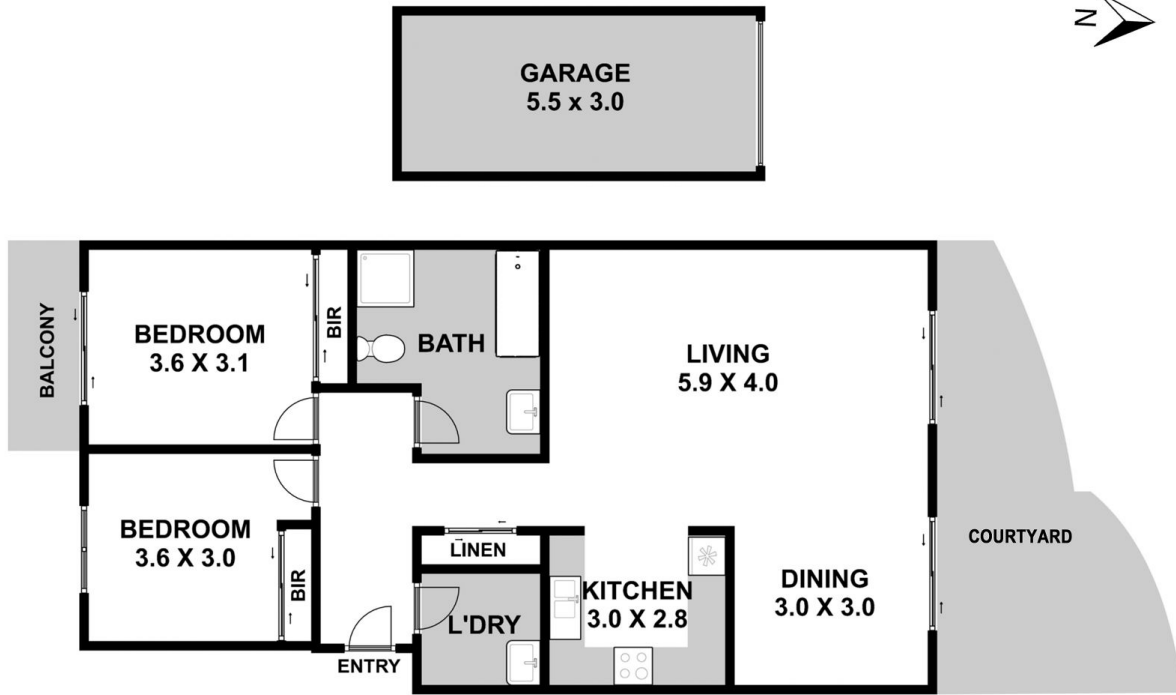


Alex Georgiou
02 9896 2333

25/505-507 Wentworth Avenue, Toongabbie,



Please note:
Floorplan measurements are a guide only.
All dimensions are approximate in their distance and volume.
We cannot guarantee its accuracy and interested persons should rely on their own enquiries.



-  2
-  1
-  1