



30 Lindsay Street Wentworthville NSW

5 🏠 2 🚗 7 🚗

So much future development potential exists with this enormous 1936sqm parcel of land nestled in a quiet street yet conveniently close to Wentworthville station, shops and Westmead Hospital. Zoned R2 Low Density allows the opportunity for a 2-3 lot subdivision, childcare centre or just enjoy the vast block for yourself (all subject to Parramatta Council approval)

Price : \$ 2,400,000
Land Size : 1936 sqm
View : <https://www.elderstoongabbie.com.au/sale/nsw/parramatta/wentworthville/residential/home/6788615>

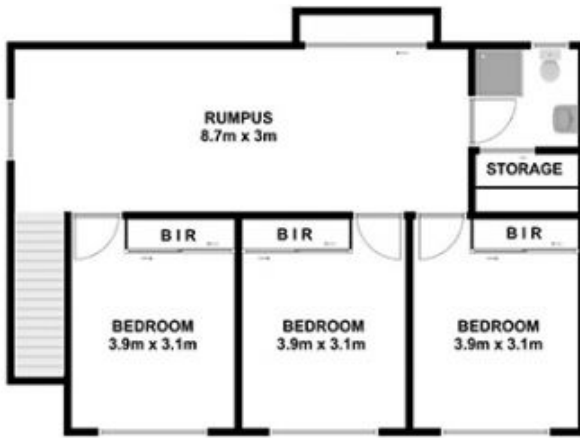
- + Level block measuring 21.345m x 96.03m.
- + Huge 5 bedroom, 2 storey home which could accommodate the large or extended family.
- + Multiple living spaces on both levels.
- + Timber kitchen with dishwasher, 2 bathrooms.
- + Ducted air-conditioning and ducted gas heating.
- + Sparkling inground pool.
- + Wide side access to the 4 car garage with 3 phase power and triple carport ideal for the tradesman, car enthusiast or



Matt Barham
02 9896 2333



Keerthi Gajendran
02 9896 2333



FIRST FLOOR



GROUND FLOOR

