

12 Manuka Street Constitution Hill NSW

4  2  1 

Spacious 4 Bedroom Home - Walk To Station & T Way

Positioned within walking distance to the Northwest Tway, Wentworthville Train Station and Westmead Hospital, this spacious 4 bedroom home is perfectly suited to a large family.

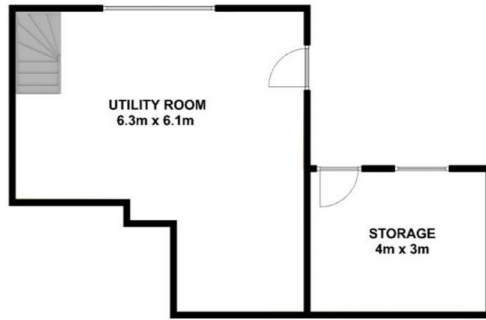
Occupying a sunny north facing aspect within a peaceful no through road setting it also captures glorious parkland views towards the rear.

Newly repainted throughout and with sparkling solid timber flooring, accommodation includes huge living and entertaining areas combined with a great sized kitchen and large bedroom sizes to create the perfect haven for a growing family.

Price : \$ 1,250,000
Land Size : 563 sqm
View : <https://www.elderstoongabbie.com.au/sale/nsw/parramatta/constitution-hill/residential/home/6757332>



Nick Bardon
 02 9896 2333



LOWER GROUND FLOOR

