

37 Portia Road Toongabbie NSW

3  1  4 

Offered to market for the first time in over 50 years, this 3 bedroom brick home occupies a vast 980m² parcel of land located within an easy 1km walk to the train station.

Explore the immense potential of this magnificent land to rebuild a luxury new home, build duplexes, a granny flat or even renovate the existing home. Adjoining the lush green expanse of Girraween Park, design your new home to capture parkland views with direct access onto the park.

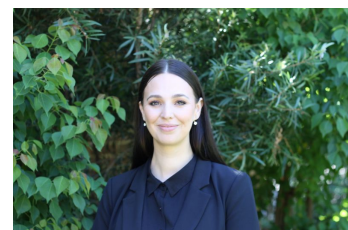
The prime location ensures close proximity to excellent public, private, catholic and selective schooling options, local shopping facilities and is within easy reach of Parramatta, Westmead and Blacktown CBD's.

Further Information :

Price : \$ 1,200,000
Land Size : 980 sqm
View : <https://www.elderstoongabbie.com.au/sale/nsw/western-sydney/toongabbie/residential/house/6657855>



Nick Bardon
02 9896 2333



Naomi Murray
02 9896 2333