



**6 Andrew Place Girraween NSW**

5 2 1

Nestled within a quiet street, enjoying an east facing aspect on the elevated side of the road, this 5 bedroom, 2 bathroom home offers comfortable accommodation for a large family while the site itself offers future development potential.

**Price** : \$ 1,205,000  
**Land Size** : 714 sqm  
**View** : <https://www.elderstoongabbie.com.au/sale/nsw/parramatta/girraween/residential/house/6433292>

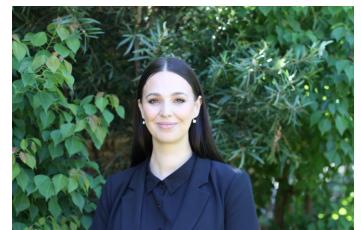
Being 714m2 in total with a 15 metre frontage and no easements, the land is just perfect and with new duplex construction underway next door, it gives you a glimpse of what may be possible on this site too.

Just 7 minutes walk to Pendle Hill Train Station and shopping centre and 6 minutes walk to the highly sought after Girraween Public School, the location is nothing short of prime.

The home itself comprises multiple living areas and



**Nick Bardon**  
02 9896 2333



**Naomi Murray**  
02 9896 2333



# Real Estate

6 Andrew Place,  
Girraween NSW 2145



Plans are for presentation purposes only and are not part of any legal document or title. They should not be used as sole reference. Interested parties should make their own enquiries using other sources. Measurements are approximates.