






### 1/68 Stapleton Street Pendle Hill NSW

3  1  1 

Designed to take maximum advantage of its north facing first floor position, this house sized 3 bedroom apartment is filled with natural light and offers an enviable location just 7 minutes walk to the train station.

The living areas offer an abundance of space with an ideal floorplan and everything you need at your fingertips. Both the living and dining rooms connect harmoniously with their own balconies, while maximum ventilation is achieved with the north, east and west facing sides of the apartment being open.

Occupying the best position within a quiet complex of only 8 properties, the apartment is street facing and being on the first floor it has the added advantage of not having too many stairs to climb.

**Price** : \$ 517,000  
**Land Size** : 122 sqm  
**View** : <https://www.elderstoongabbie.com.au/sale/nsw/parramatta/pendle-hill/residential/unit/5975380>



**Nick Bardon**  
02 9896 2333

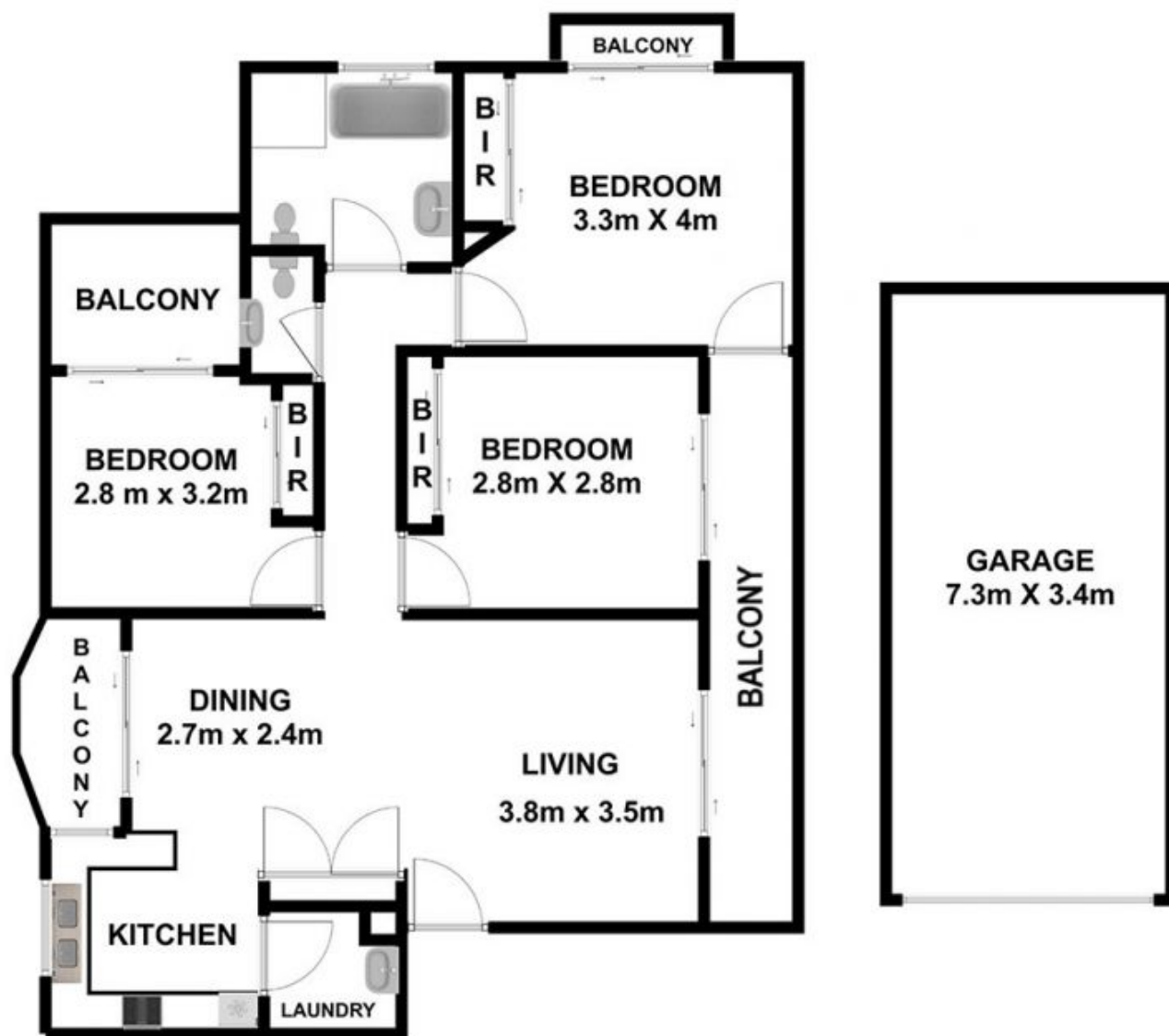


**Marko Miletic**  
02 9896 2333



# Real Estate

1/68 Stapleton Street  
Pendle Hill NSW 2145



Plans are for presentation purposes only and are not part of any legal document or title. They should not be used as sole reference. Interested parties should make their own enquiries using other sources. Measurements are approximates.