

# Elders



**1/485 Wentworth Avenue Toongabbie NSW**

2 1 2

This absolutely affordable and highly convenient 2 bedroom apartment located within a few minutes walk to the train station and shopping centre represents an exciting opportunity for astute investors or owner occupiers who demand convenience.

Being situated opposite Toongabbie train platform will save busy commuters valuable travel time, only adding to the appeal of this cosmopolitan apartment.

The light filled design comprises an enormous kitchen overlooking open plan living areas featuring new timber laminate flooring and split system air conditioning, large bedrooms - main with built in wardrobe and there is the added bonus of a double lock up garage.

The advantage of being positioned on the first floor with

**Price** : \$ 425,000  
**Land Size** : 105 sqm  
**View** : <https://www.elderstoongabbie.com.au/sale/nsw/western-sydney/toongabbie/residential/unit/5877490>



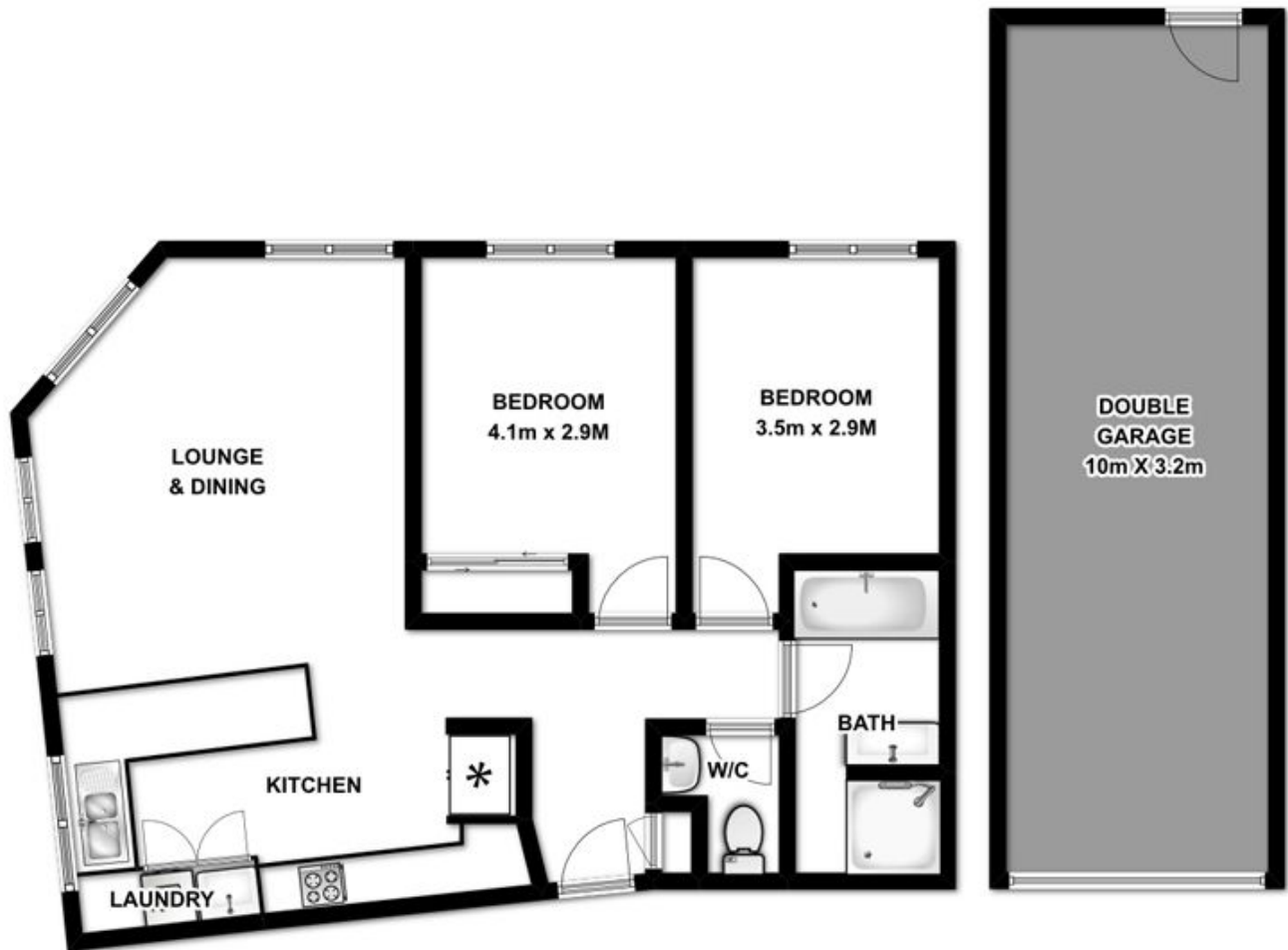
**Nick Bardon**  
02 9896 2333

<https://www.elderstoongabbie.com.au>



**Real Estate**

1/485 Wentworth Avenue  
Toongabbie NSW 2146



Plans are for presentation purposes only and are not part of any legal document or title. They should not be used as sole reference. Interested parties should make their own enquiries using other sources. Measurements are approximates.