



1/19-21 Jessie Street Westmead NSW

2  **1**  **1** 

Presenting the perfect example of spacious, convenient and affordable living in one of the most sought after locations in Western Sydney.

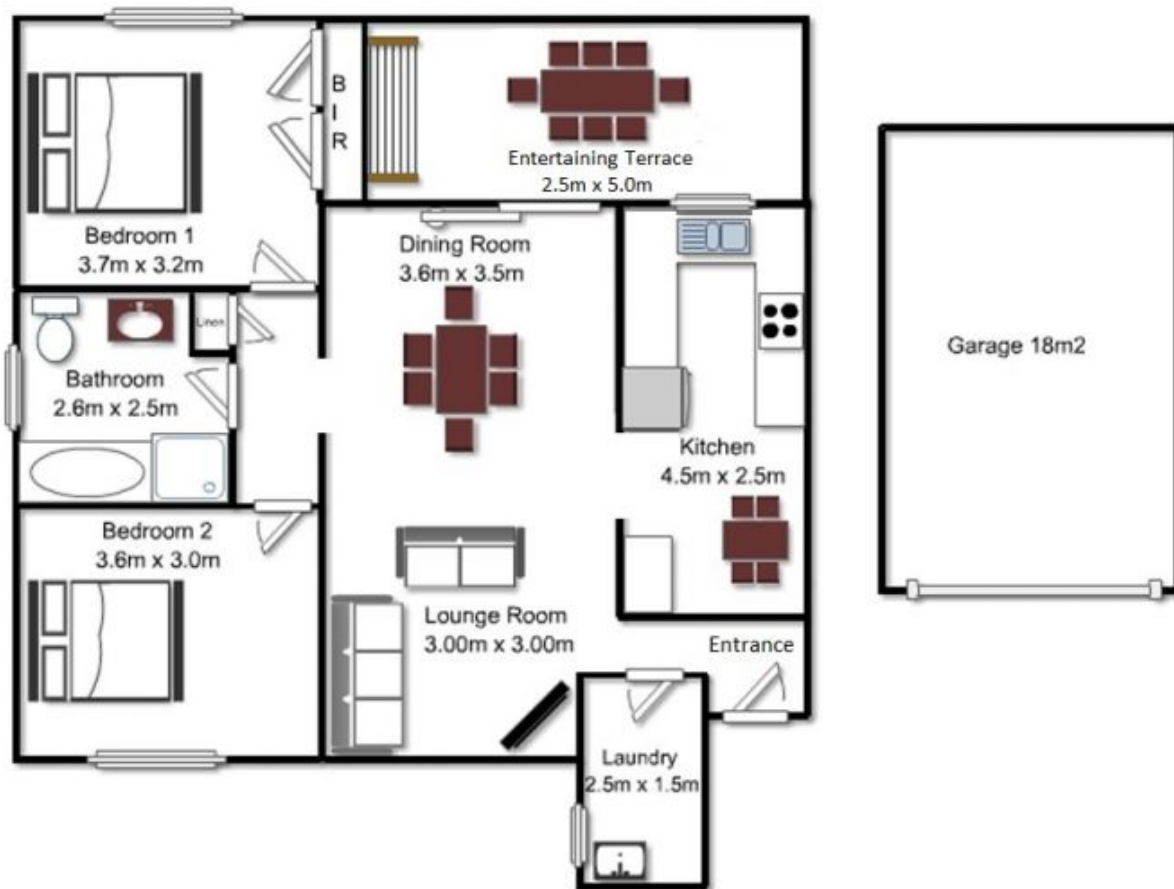
This large 2 bedroom apartment is positioned within walking distance to the train station, public and private hospitals, the local shopping centre and the wide open recreational parklands at Parramatta park making it an ideal purchase for first home buyers, investors and downsizers alike.

Set in the front of a well maintained complex of only 11 apartments this particular property is unique as it offers completely level access with absolutely no stairs to climb making it perfect for families with young children, the elderly, the disabled or anyone who just doesn't like the hassle of climbing stairs every day. Buyers who have been

Price : \$ 420,500
Land Size : 108 sqm
View : <https://www.elderstoongabbie.com.au/sale/nsw/parramatta/westmead/residential/unit/5875891>



Nick Bardon
02 9896 2333



Plans are for presentation purposes only and are not part of any legal document or title. They should not be used as sole reference. Interested parties should make their own enquiries using other sources. Measurements are approximates.